

2021/22 Q3

ADULT SOCIAL CARE AND PUBLIC HEALTH

Cabinet Member: Councillor Karl Love

Portfolio Responsibilities:

- Adult Social Care
 - Community Care
 - Residential Care
 - Nursing Care
 - Homecare
 - Day Care
 - Direct Payments
 - Supported Living
 - Learning Disability homes
 - Respite Care
 - Resettlement
 - Safeguarding
 - Social Workers
- Public Health
 - Family Working
 - Healthy Lifestyles
 - Domestic Abuse
 - Early Help Services
 - Obesity
 - Social Health
 - Substance Misuse
 - 0-19 Services

Service Updates - Key Aspirations and Ongoing Business

Integration with partners continues to be a key workstream within the department, with activities being aligned with health partners where possible, and where there is clear evidence that this benefits Island residents.

While the review of the Independent Living Strategy has been delayed as a result of the pandemic, and the associated staffing impact, this will be picked up again in March 2022. However, Green Meadows extra care housing facility in Freshwater has been successfully delivered, thus providing 75 units of affordable extra care housing for elders and disabled adults aged over 55.

The support and restoration of Mental Health support services is considered in all activities relating to strategy development, commissioning decisions and within our internal services across the department. Moving forward in this vein, the Early Help/Living Well offer will enable a greater focus on mental wellbeing in our local communities. The review of these services has been completed and bids to deliver them are currently being evaluated.

The review of the Care Close to Home Strategy continues to progress, with action plans completed. Community engagement activities are currently in planning stages as part of the Carers Strategy also - The support available for informal carers has been recommissioned and includes a requirement for the provider to ensure that they are actively promoting assessments for carers, and quarterly reporting is in place to evidence the number of carers receiving support.

The Better Care Fund for 2021/2022 has now been approved and we are working towards the 2022/2023 arrangements which include a refresh of governance, reporting and accountability to ensure integrated commissioning for the benefit of Island residents and communities.

Work continues with the Safeguarding Adult Board to promote 'Making Safeguarding Personal' and ensure that there is a high quality and consistent approach. Safeguarding Adults week (November 2021) provided an opportunity to promote key messages with partners and with the local community which were well received.

Public Health Commissioners undertake quarterly contract monitoring meetings with providers, agreeing action where necessary to improve quality. Quality reports are reviewed by the Public Health Management Team. The contract for specialist sexual and reproductive health services is in place until March 2023 and a sexual health needs assessment is underway to inform further service redesign where required to meet local needs.

Covid-19 is reviewed twice weekly by the Public Health Management Team and reported regularly through CMT and the Isle of Wight Health Protection Board. Actions including comms and engagement, testing and support for the NHS vaccination programme are informed by this intelligence and continue to be implemented in line with national policy and local needs.

The Covid-19 Impact Report that was presented to the Health and Wellbeing Board in October 2021 will inform the refresh of the Joint Strategic Needs Assessment (JSNA) during Spring 2022. This refresh will also be supported by a wider health and wellbeing survey that will help better understand the needs of Island residents.

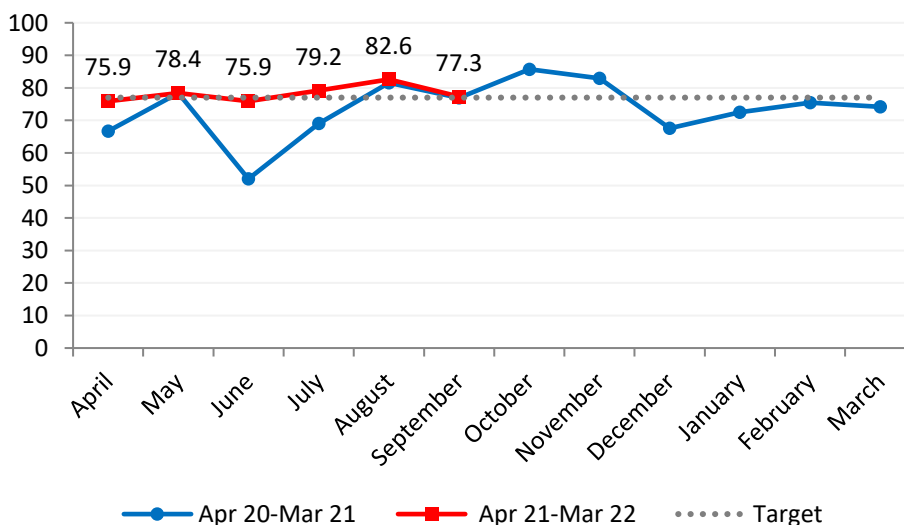
Performance Measures

Please note that annual measures will only be reported in Quarter 4. For this portfolio, this will include:

- Rate of permanent admissions to residential & nursing care homes per 100k population (65+)
- Proportion of people in receipt of care and support funded by the council supported to remain in own home
- Number of households in temporary accommodation
- Proportion of people in need of secondary mental health support
- Life expectancy at birth (males)
- Life expectancy at birth (females)

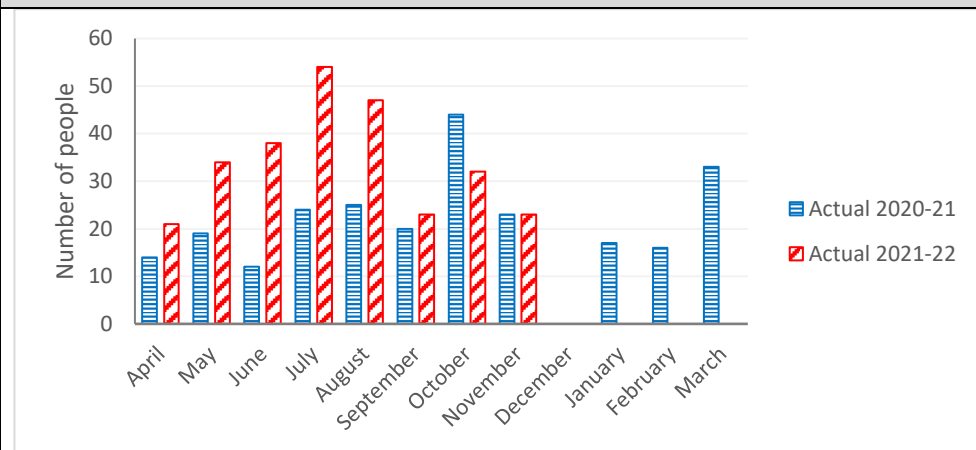
The exception to this will be annual measures that are updated during a year where it would be more sensible to bring in that change.

Proportion of older people (65+) still at home 91 days after discharge from hospital into reablement/ rehabilitation services



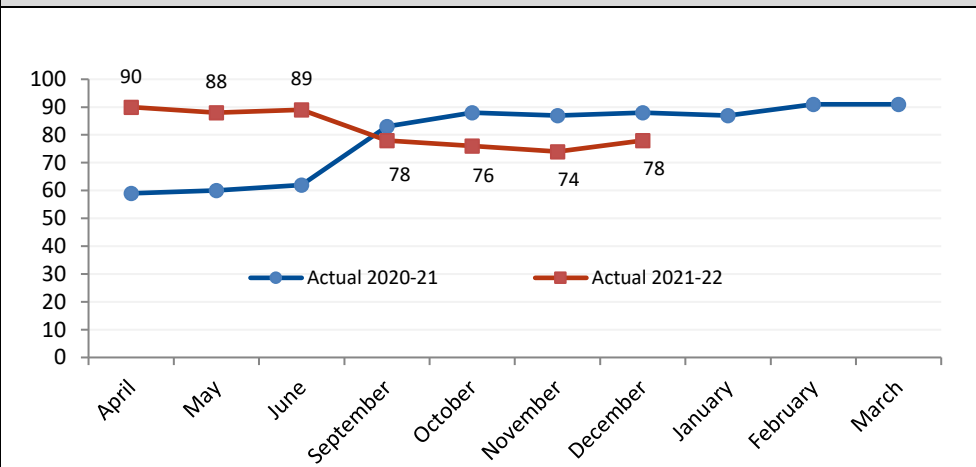
- We remain above the target level of 75 percent of older people still at home 91 days after discharge
- The trend remains stable, in contrast to the same period last year.
- We are currently below the average for the South East region of 82 percent.
- Of the 17 people in September that were not at home after 91 days, 4 people died, 6 were readmitted to hospital, and 7 people went into Residential care

Number of people stopping smoking 4 weeks (in the commissioned service)



- Please note: There can be a data lag of up to 6 weeks depending on when each quit date was set in the month.
- The total number of people stopping smoking in 4 weeks for Quarter 3 is 55, compared with 67 for the same period last year.
- There is not yet data available to compare with the national average

Successful completion of alcohol treatments

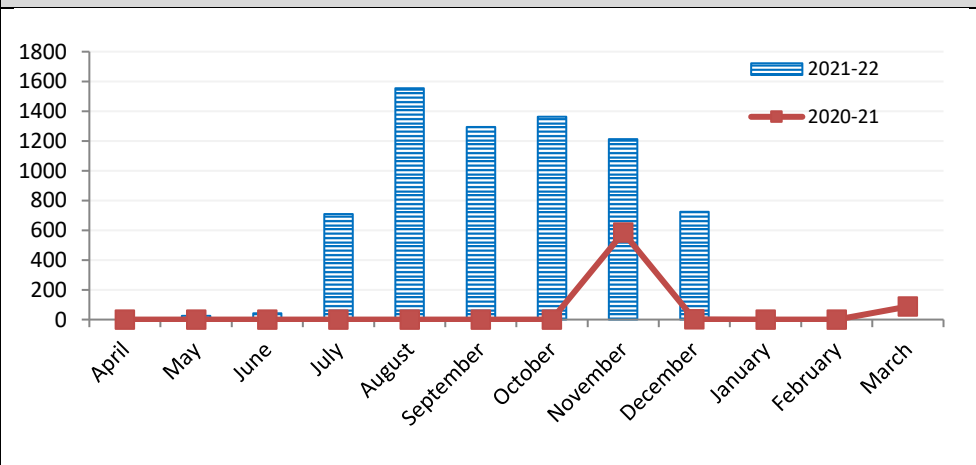


- The December data release shows 78 completions out of 258 in treatment compared with 88 for the same period last year
- While completions appear lower than last year, numbers referring in to alcohol treatment have risen sharply and there are some hidden outcomes from our brief intervention pathway.

NB. No data is published in July (recorded in August)

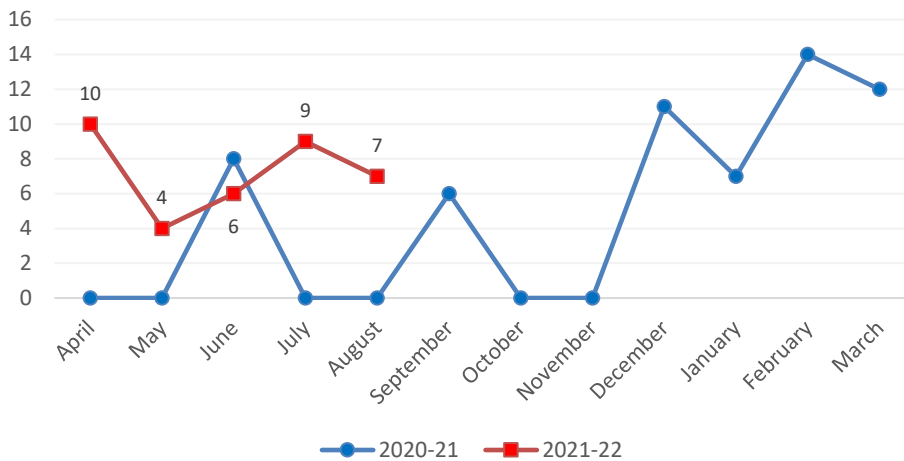
- We have stepped up face to face recovery worker appointments which has helped our progress, along with face to face groups. Virtual group numbers have also improved.

Number of adults 25+ taking part in sport or physical activity



- Figures for this year are substantially higher than for the same period last year, this is unsurprising given the national lockdown in place at the time.
- After a peak in August of 1,555 there was a gradual decline through Quarter 3 to 725 in December, likely due to a reduction in organised activity for the Christmas break.

Number of people achieving weight loss of 5 percent of body weight in 12 weeks (in commissioned service)



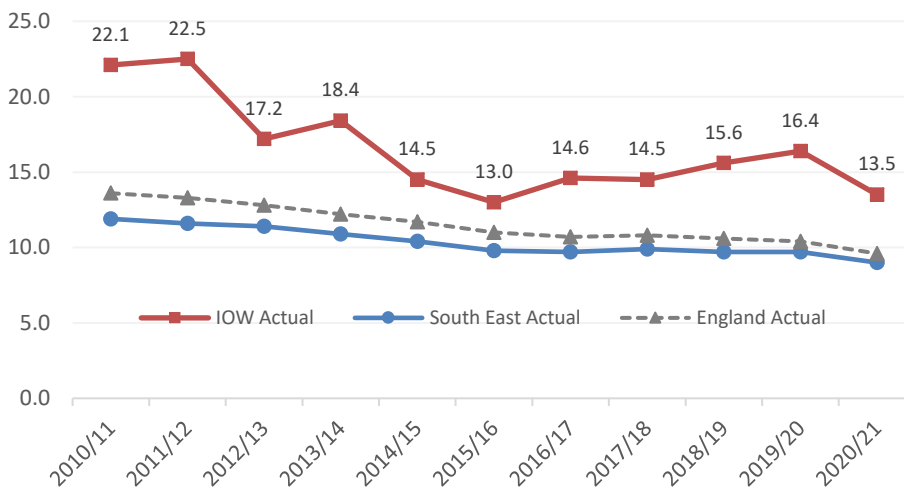
- Face-to-face provision restarted in August-21 following the second national lockdown. Prior to this, telephone support was offered as an alternative to the wait-list.
- There is a time lag of 12 weeks and numbers are all tied to the enrolled/access date.

- There were 16 people achieving 5 percent weight loss in Quarter 2 (though this may increase when September data becomes available) compared to 6 in the same period last year

Number of people discharged from hospital progressing direct to long term support at home (ASCHN funded)

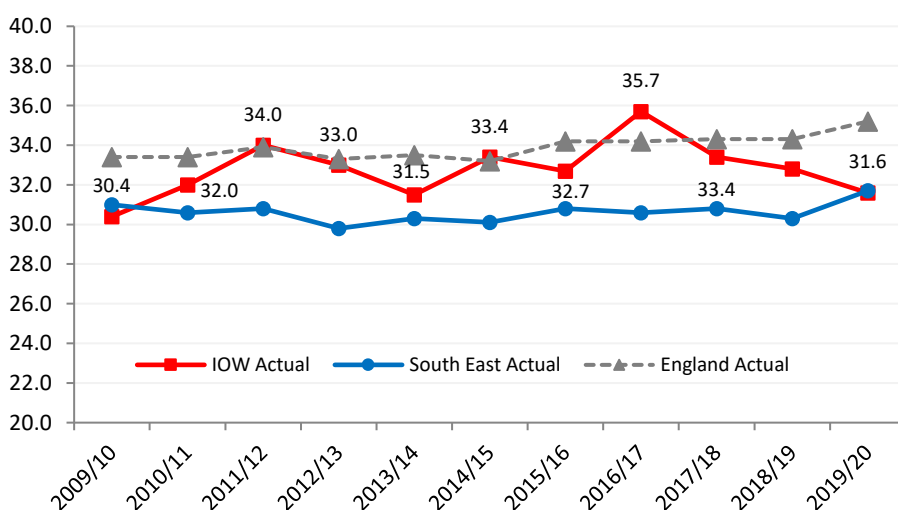
- This is a new measure introduced in the 2021 Corporate plan and thus no data is yet available
- An update is expected for the Quarter 4 report

Smoking at time of delivery (birth of baby)

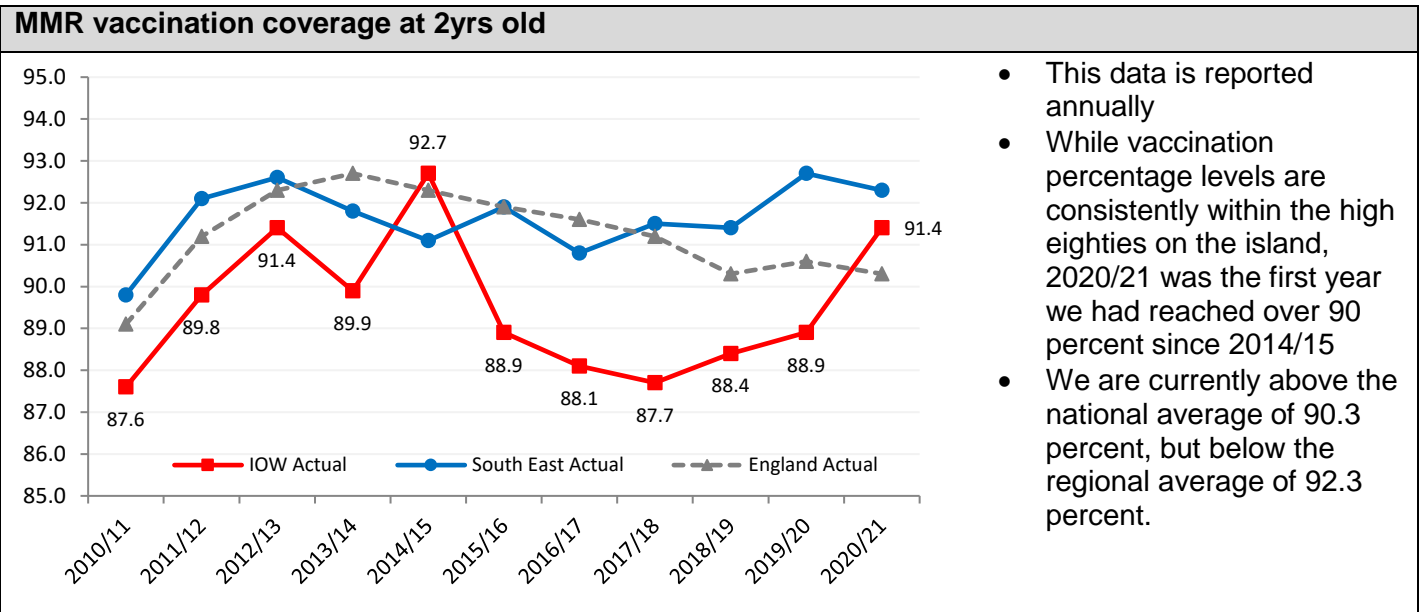


- This data is reported annually
- There has been a significant downward trend over the last decade; equivalent to 8.6 percent on the island. (levels in 2010/11 were 22.1%)
- This is despite a slight uptick of 2.6 percent between 2015/16 and 2019/20
- These trends are broadly inline with the regional and national reported figures.

Percentage of children overweight or obese in Y6



- This data is reported annually
- There have only been slight variations on the percentage of children overweight or obese in year 6 over the last decade on the island, with the exception of an outlier of 35.7 percent in the year 2016/17.
- There has been an overall increase of 1.2 percent on the island, compared with 0.7 in the South East and 1.8 in England.



Strategic Risks

Failure to recruit acceptable quality of professional practice across Adult Social Care (ASC) and Housing Needs

Assigned to: Director of Adult Social Care

Inherent score	Target score	Current score
14 RED	6 GREEN	8 AMBER
Previous scores		
Sep 21	Jul 21	Feb 21
8 AMBER	8 AMBER	8 AMBER
Risk score is consistent		

Failure to identify and effectively manage situations where vulnerable adults are subject to abuse

Assigned to: Director of Adult Social Care and Assistant Director of Operations

Inherent score	Target score	Current score
16 RED	6 GREEN	10 AMBER
Previous scores		
Sep 21	Jul 21	Feb 21
10 AMBER	10 AMBER	12 RED
Risk score is stabilising		

Failure to secure the required outcomes from the integration of adult social care and health

Assigned to: Director of Adult Social Care

Inherent score	Target score	Current score
16 RED	6 GREEN	10 AMBER
Previous scores		
Sep 21	Jul 21	Feb 21
10 AMBER	10 AMBER	12 RED

Risk score is stabilising

Independent Social Care Sector Sustainability (care Homes and Home Care)		
---	--	--

Assigned to: Director of Adult Social Care		
---	--	--

Inherent score	Target score	Current score
16 RED	6 GREEN	12 RED
Previous scores		
Sep 21	Jul 21	Feb 21
12 RED	N/A	N/A
Risk score is consistent		

Additional demands placed upon the Isle of Wight Council and partners owing to pandemic flu or similar large-scale outbreaks		
---	--	--

Assigned to: Director of Public Health		
---	--	--

Inherent score	Target score	Current score
16 RED	12 RED	16 RED
Previous scores		
Sep 21	Jul 21	Feb 21
16 RED	16 RED	16 RED
Risk score is consistent		